

Workplace Designs Limited

Ref : WDL24

Office Zoning Visualisation



Office Zoning Visualisation

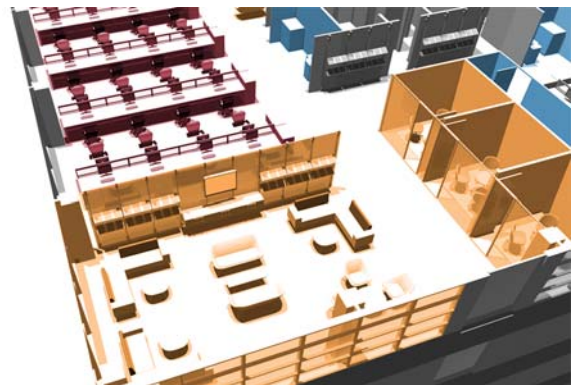
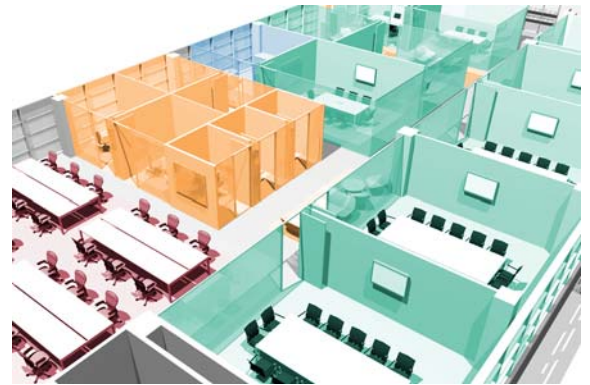
Ref : WDL24

Project Type:	3D Visualisation
Involvement:	3D modelling of complete floorplate Modelling of clients preferred furniture Full rendering Photoshop editing

Workplace Designs were appointed to undertake a series of Test Fits for their clients new building in Milan, Italy. The initial task included the development of the clients special brief, dynamic space blocking, generic workplace planning and presentation drawings. Please refer to WDL11 for more details on Test Fits.

Using 3D software to model the building the team were able to create a concept model into which furniture & fittings could be placed. 3D visuals were then rendered and then re-coloured into the different area types.

The 3D renders allowed the client to visualise the different ways that their staff would be able to work and collaborate together. It also allowed them to visualise how the proposed building would meet their workspace requirements



-  Work Space
-  Neighbourhood
-  Village
-  Support

