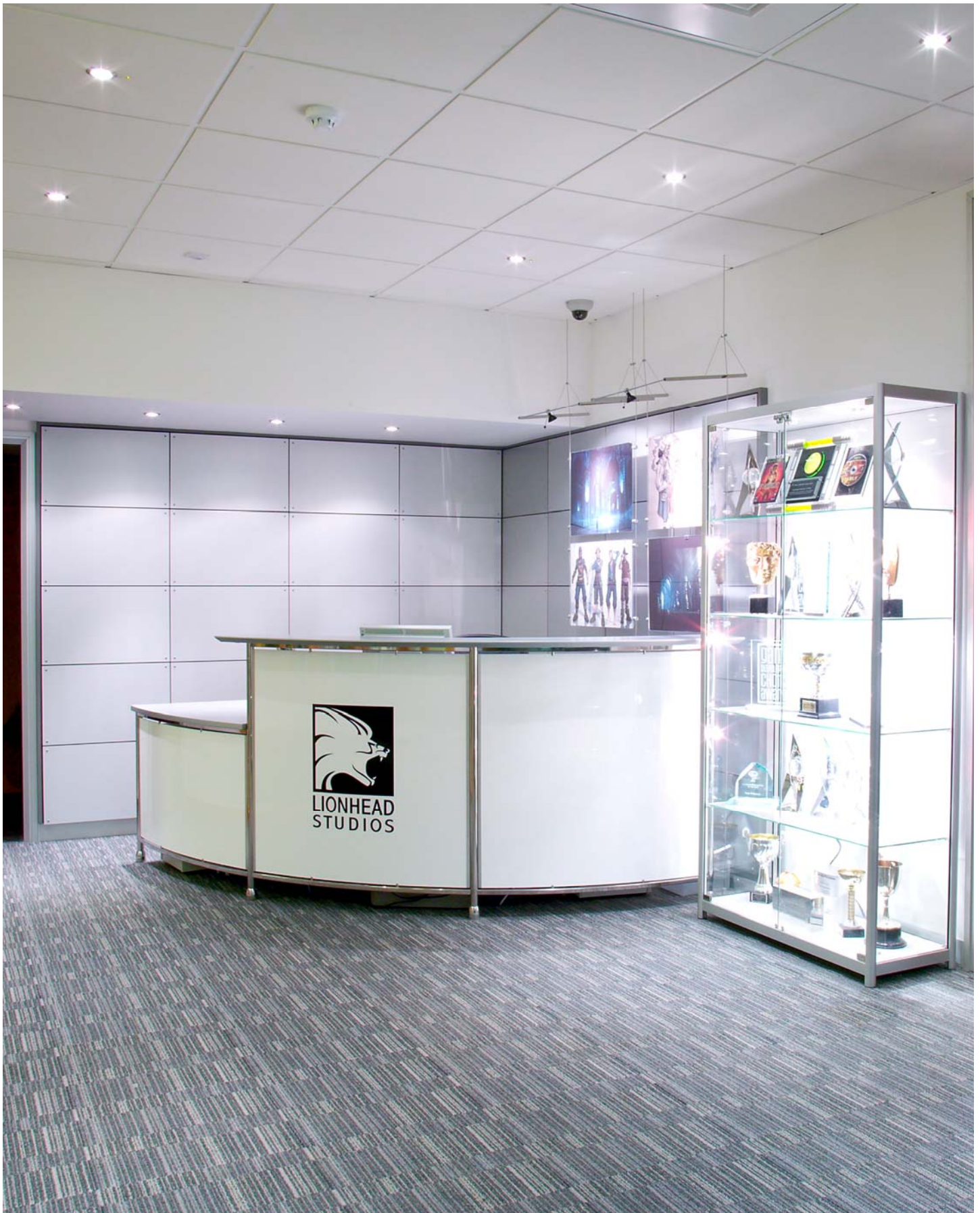


Workplace Designs Limited

Ref : WDL19

Interior Design and Furniture Procurement



Interior Design & Furniture Procurement

Ref : WDL19

| | |
|----------------------|---|
| Project Type: | Full Interior Design Scheme |
| Value: | £1.3m |
| Involvement: | Concept design scheme Full interior scheme specification Working drawing production for contractor Furniture procurement Moves management from 4 offices into one new head office |



Workplace Designs were appointed to provide a full interior design scheme for this computer games company based in Surrey. The team produced several design options for the accommodation and for client approval.

The selected design was then developed into a set of full working drawings for the contractor. All fixtures, finishes and equipment was specified to suit the clients budget.

WDL specified and procured furniture from a variety of manufacturers and the installation phased and managed over three weeks.

The move management of 300 staff from four offices to one was managed by the team and carried out over one weekend.

